

# Product Catalogue & Project Reference





## ABOUT US

**Bronco Synergy Resources Sdn. Bhd.** was founded in December 2011 and was later incorporated as a private limited company in October 2012. Being a progressive company in the Malaysian market, our business specializes in providing our customers highly innovative and technologically advance window automation systems applicable to the residential, commercial, industrial, hotel and resort architectural building industry.

Our team have more than 30 years of on job experience in the architectural supply industry. We are focused based business in providing our customers the best solutions in meeting the requirements for their window automation system needs.

Located within the prime area of Shah Alam, Malaysia, our business also provides technical support services to our prospective customers in terms of actuator products advisement, window automation system consulting, and technical maintenance.

Together with our Ultraflex Control System s.r.l. (Italy) and Mont Building Resources (East Malaysia) partners, new and improved actuator products are continuously being introduced in the Malaysian and ASEAN markets and Bronco Synergy Resources Sdn. Bhd. is committed in providing the best solution and services to our valued customers.

## We Specialize In :-

- Natural Air Window Ventilation System.
- Natural Smoke Window Ventilation System.
- **ELECTRA**® Ventilating Roof Window System.
- Supplier for adjustable louvres, sunshade louvres, aluminium windows & cast aluminium grills.

## Our Products :-



**UCS**®

**Actuator products** are a complete line of quality electric chain, and linear actuators that allows our customers the choice of the more suitable actuator for every kind of window requirement.

With over 70 years of experience, the UCS actuator products provides our customers with the highest quality and more innovative actuator products for your industrial and architectural building needs.

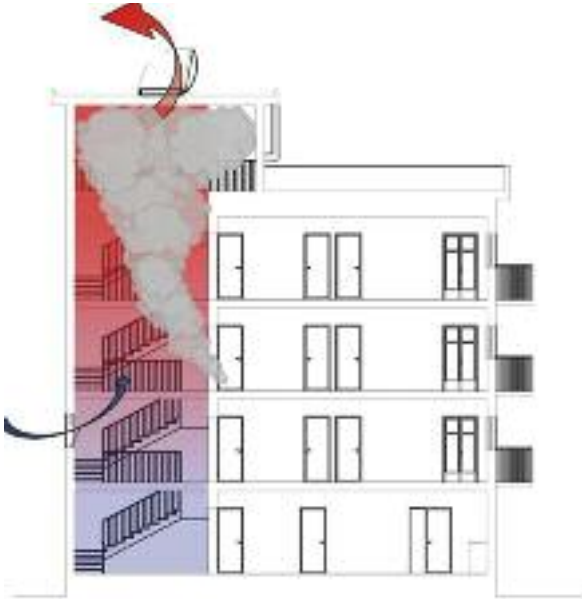


**ELECTRA**®

**Ventilating Roof Window System** is a newly design ventilating roof window that allows you to bring in the majestic view of the blue sky into the interiors of your home or building.



# Energy Saving, Comfort and Safety

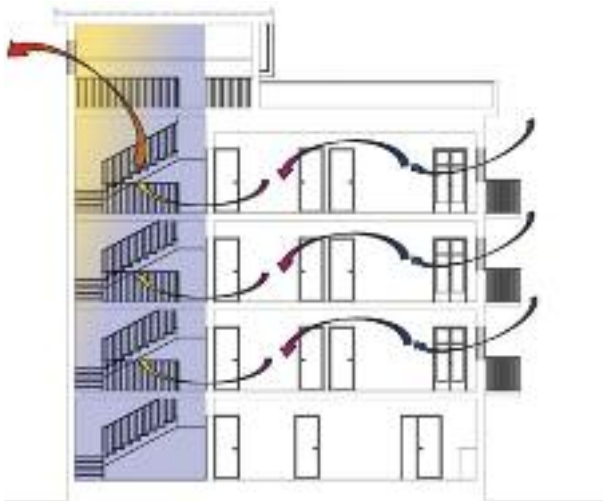


## NATURAL SMOKE AND HEAT WINDOW VENTILATION SYSTEM

**..for the safety in the building in case of fire emergency**

Dedicated customize Control Panels, UCS actuators tested in fire conditions able to operate windows, skylights and louvres for natural smoke ventilation:

- Smoke is the first cause of death during a fire in a building
- Emergency exits, escape routes must be free of smoke
- BOMBA can enter, save lives and extinguish fire

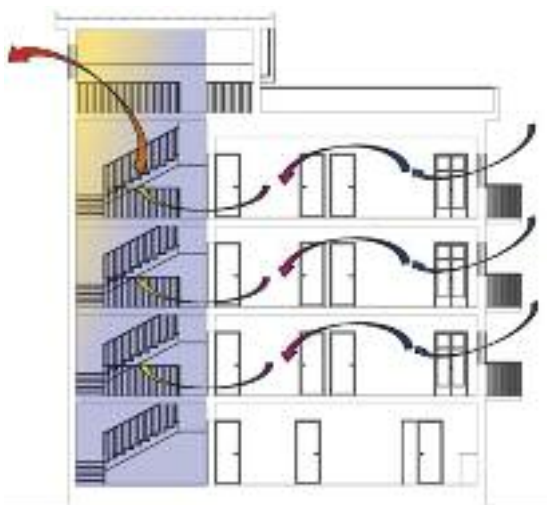


## NATURAL AIR WINDOW VENTILATION SYSTEM

**..for healthy indoor environment**

The smartest choice of solutions for automated window remote control system:

- Reducing carbon dioxide (CO2) level
- Reducing Air Conditioning
- Improving indoor air quality



## GREEN BUILDING

**..for energy saving, comfort and safety in building**



By the integrating into the Building Management Systems (BMS) the window automation allows:

- Energy saving automatic switch-off or reduced use of Air conditioning, heating, lights.
- Comfort in the building easy control of window automation through computer or other devices, quiet operation, wellbeing that becomes health, then productivity at job place or school.

... Granting at the same time safety by smoke ventilation in case of fire emergency

# UCS SINTESI

Chain actuator - Force in pull action 300 N - Stroke 250-380 mm.



Natural Air Window Ventilation System.



Natural Smoke Window Ventilation System.

- Possibility of selecting two different strokes: 250 mm or 380 mm.
- Three dovetail slides for an easy installation; the sliding fixing bracket is included in the package.
- **UCS SINTESI 2000**: Exclusive system for electrical connection. The special removable plug allows a very quick and easy connection. It is ideal for the final test of the actuators on the building site.
- For installation on top hinged windows select the 250 mm stroke in order to better resist to the wind load.
- In case of vents with four-bar hinges, please contact our BSR Technical Department.
- Minimum window height: 500 mm with 250 mm stroke, 800 mm with 380 mm stroke. In case of lower windows install the pivoting bracket part.
- A longer eyelet is available on request in case of wooden or PVC windows.
- For installation of two **UCS SINTESI 2000** on the same vent it is available a control coupling unit 230 V AC.
- 24V DC version is suitable for installation on **Smoke Window Ventilators** in conformity to **European Standard EN 12101-2**, tested by Giordano Institute (Italy).

Technical Data	SINTESI 2000 AC	SINTESI 24 V DC
VOLTAGE SUPPLY	230 V AC $\pm$ 10%	24 V DC $\pm$ 10%
ELECTRIC CONNECTION	3 wires + earth	2 wires
OPERATION		by polarity inversion
STROKE	Selectable 250 mm/380 mm	Selectable 250 mm/380 mm
FORCE IN PUSH ACTION	180 N (stroke 250 mm) 90 N (stroke 380 mm)	180 N (stroke 250 mm) 90 N (stroke 380 mm)
FORCE IN PULL ACTION	300 N	200 N
SPEED	~ 40 mm/s	~ 14 mm/s
ABSORPTION (with max load)	0.65 A	1 A
PARALLEL CONNECTION	YES	YES
LIMIT STOP	Micro switches	Micro switches
SAFETY STOP	Thermic	Electronic
FEEDBACK SIGNAL	close	open/close
PROTECTION CLASS	IP 20	IP 20

## Colour Type:



SILVER ANODIZED



WHITE PAINTED RAL 9010



DARK BROWN ANODIZED

## SPECIFICATION PROSPECTS

Electric chain actuator brand named UCS SINTESI come with selectable stroke 250 mm or 380 mm.

Voltage supply 230 V AC or 24V DC. Removable plug for electrical connection (230 V AC version). Parallel connection.

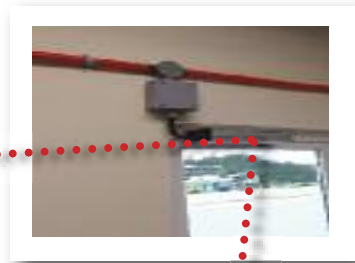
Limit stop by micro switches, thermal protection in case of overload (230 V AC version) or electronic safety stop (24 V DC version). Casing in silver anodized, dark brown anodized, white painted RAL 9010. The 230 V AC version and the 24 V DC version are conform to 2004/108/CE directive, the 230 V AC version is conform also to 2006/95/CE directive.

# Project Reference: UCS SINTESI



International Islamic University Malaysia, Science Foundation Centre, Phase 2, Gambang, Pahang, Malaysia.

# Project Reference: UCS SINTESI



International Islamic University Malaysia, Science Foundation Centre, Phase 3, Gambang, Pahang, Malaysia.

## Project Reference: UCS SINTESI



# UCS STILE

Chain actuator – Force 300 N – Stroke 400 mm.



Natural Air Window Ventilation System.

- Double link chain for a better load resistance in case of top hinged windows, heavy windows or roof windows.
- Three available versions: **UCS STILE** with a selectable stroke 230/400 mm, **UCS STILE R** with a maximum stroke of 400 mm, adjustable from 0 to 300 mm, by positioning a magnet on the chain during installation and **UCS STILE RF** with a selectable stroke 230/400 mm and full integrated radio receiver.
- Glass strengthened nylon casing.
- Double electric insulation actuator (no electric connection to earth is needed).
- The special removable plug allows a very quick and easy connection. It is ideal for the final test of the actuators on the building site.
- Exclusive system for a quick and safe installation.
- Quick release system for an easy window cleaning.
- Supplied with pivoting brackets and spacer for chain connector to be used on windows with a high overlap.
- In case of vents with four –bar hinges, please contact our BSR Technical Department.
- Provided with closing feedback signal.

Technical Data	STILE	STILE R	STILE RF
VOLTAGE SUPPLY	230 V AC 50/80 Hz	230 V AC 50/80 Hz	230 V AC 50/80 Hz
ELECTRIC CONNECTION	3 wires (*)	3 wires (*)	3 wires (*)
MAXIMUM STROKE	selectable 230/400 mm	400 mm (adjustable from 0 to 300 mm)	selectable 230/400 mm
FORCE	300 N (**)	300 N (**)	300 N (**)
SPEED	~ 30 mm/s	~ 30 mm/s	~ 30 mm/s
CURRENT ABSORPTION (with max load)	0.8 A	0.8 A	0.8 A
PARALLEL CONNECTION	YES	YES	YES
LIMIT STOP	Micro switches	Micro switches/Hall sensor	Micro switches
PROTECTION	Thermic	Thermic	Thermic
FEEDBACK SIGNAL	Close	Close	Close
PROTECTION CLASS	IP20	IP20	IP20
RADIO RECEIVER (integrated)	NO	NO	YES

(\*) Double electric insulation actuator: no electric connection to earth is needed.

(\*\*) In case of push action and full stroke, maximum force is intended for short period only.

## Colour Type:



GRAY



BLACK

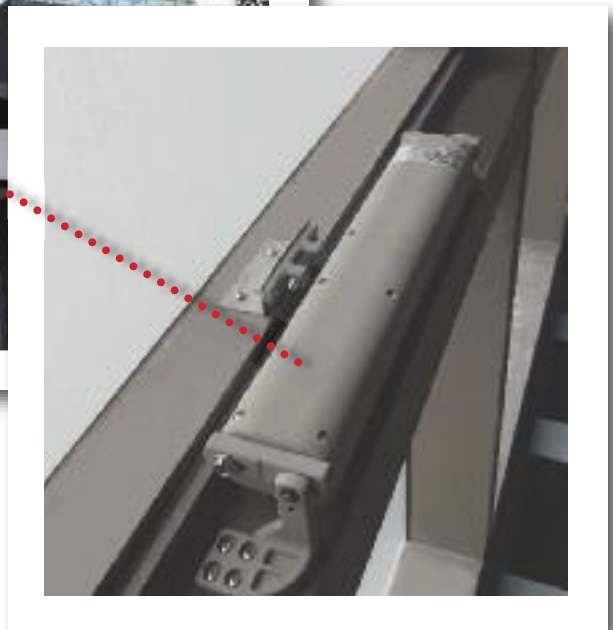


WHITE

## SPECIFICATION PROSPECT

Class 2 electric insulation chain actuator brand named **UCS STILE** comes with double link chain in two versions: selectable stroke 230/400 mm or adjustable stroke from 0 to 300 mm. Voltage supply: 230 V AC. Parallel connection. Limit stop by micro switches and thermal protection. Plastic scratch resistant finish. Conform to 2006/95/CE LVD and 2004/108/CE EMC directives.

# Project Reference: UCS STILE



Shaftbury Square, Cyberjaya, Selangor, Malaysia.

# Project Reference: UCS STILE



# UCS QUASAR L - SYNCHRO QUASAR L

Chain actuator – Force in push action 300-150-100 N – Stroke 600-750-1000 mm.



Natural Air Window Ventilation System.



Natural Smoke Window Ventilation System.

- Available in 3 different series strokes: 600 mm – 750 mm – 1000 mm (750 and 1000 mm only for bottom hinged windows).
- Chain in double stainless steel links.
- Anodized (silver) or painted (white or black) aluminium casing.
- Quick and easy installation: the manual closing position regulation is not required, avoiding possible mistake. The stop in closing position is regulated by an electronic limit switch control.
- Electronic stop in the intermediate positions in case of overload.
- Easy replacement of the cable in case a different or longer cable or a different colour is required; upon request it is possible to supply actuators with cable exit by the opposite side.
- Supplied with 3m cable and pivoting brackets for top hinged windows.
- **UCS SYNCHRO QUASAR L** version is equipped with an integrated speed synchronization control board that allows the mounting of more than one actuator on the same vent, avoiding the installation of an external control panel. **AC version: 1 UCS SYNCHRO QUASAR L AC + 1 UCS SYNCHRO QUASAR L DC** (max 2 couples), **DC version: max 4 UCS SYNCHRO QUASAR L DC.**
- In case of Building Management System avoid repetitive commands in the same direction. For further information contact our BSR Technical Department.
- **UCS QUASAR L DC F-SIGNAL** and **UCS SYNCHRO QUASAR L DC F-SIGNAL** are special versions with opening and closing feedback signal (free potential, maintained contact), activated by the current limit. **UCS SYNCHRO QUASAR L DC F SIGNAL** is provided with additional cable.
- For a higher resistance against atmospheric agents, it is available on request the **UCS Quasar L DC** version with protection class **IP42**.
- Available the version Quasar BMSline with programmable features (stroke, speed, force, etc.) and different scenarios selectable with a connection to a computer and dedicated software.
- 24 V DC version is suitable for installation on **Smoke Window Ventilators** in conformity to **European Standard EN12101-2**, tested by **Giordano Institute (Italy)** and **IFT Rosenheim (Germany)**.

Technical Data	QUASAR L AC	QUASAR L DC
VOLTAGE SUPPLY	100 Vac – 240 Vac	24 Vdc ± 10%
ELECTRIC CONNECTION	3 wires + earth	2 wires
OPERATION		by polarity inversion
STROKE	600 – 750 – 1000 mm	600 – 750 – 1000 mm
FORCE IN PULL ACTION	300N	300N
FORCE IN PUSH ACTION (stroke)	300N (600mm) – 150N (750mm) 100N (1000mm)	300N (600mm) – 150N (750mm) 100N (1000mm)
SPEED	~ 15 mm/s*	~ 15 mm/s
CURRENT ABSORPTION (with max load)	0.4 A – 0.2 A	0.9 A
PARALLEL CONNECTION	YES	YES
LIMIT STOP	Electronic	Electronic
SAFETY STOP	Electronic	Electronic
FEEDBACK SIGNAL	-	-
PROTECTION CLASS	IP40	IP40

\*Available on request QUASAR L AC SILENT version, speed reduced to 7 mm/s for quiet operation.

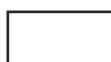
## Colour Type:



ANODIZED ALUMINIUM



BLACK RAL 9005



WHITE RAL 9010

# Project Reference: UCS QUASAR L - SYNCHRO QUASAR L



## SPECIFICATION PROSPECTS

Electric chain actuator brand named **UCS QUASAR L** with chain in double stainless steel links. Voltage supply: from 100 to 240 V AC or 24 V DC – Electronic limit stop; electronic stop in the intermediate positions in case of overload. Casing in aluminium: Anodized (silver) or painted (white or black). Pivoting brackets included. The 100-240 V AC version and the 24 V DC version are conform to 2004/108/CE, the 100-240 V AC version is conform to 2006/99/CE directives.

Electric chain actuator brand named **UCS SYNCHRO-QUASAR L** with chain in double stainless steel links. Suitable for mounting more than one actuator (max 4 actuators) on the same vent. Voltage supply: from 100 to 240 V AC or 24 V DC – Electronic limit stop; speed control; electronic stop in the intermediate positions in case of overload. Casing in aluminium: Anodized (silver) or painted (white or black). Pivoting brackets included. The 100-240V AC and the 24V DC versions are conform to 2004/108/CE directives , the 100-240 V AC version is conform also to 2006/95/CE directive.

## Project Reference: UCS QUASAR L - SYNCHRO QUASAR L



**UCS QUASAR L**

# UCS TWIN QUASAR

Chain actuator with encoder. Twin Quasar: Force 600 N - Maximum stroke 500 mm.



Natural Air Window Ventilation System.



Natural Smoke Window Ventilation System.

- Chains in double stainless steel links.
- The control electronic circuit synchronizes the speed of the motors through encoder.
- Anodized (silver) or painted (white or black) aluminium casing.
- The manual closing position regulation is not required: the stop in closing position is regulated by an electronic limit switch.
- Being provided with two chains, the **UCS TWIN QUASAR** is particularly suitable for very wide windows. For a better aesthetic result, on request, it is possible to supply actuators with customized distance between the chains (minimum 700 mm for **UCS TWIN QUASAR**) in order to get same width of the window.
- Supplied with 3m cable and pivoting brackets.
- The installation without brackets is possible only if the height of the vent is at least 1,500 mm for **UCS TWIN QUASAR**.
- **UCS TWIN QUASAR DC F-SIGNAL** is a special version with opening and closing feedback signal (free potential, maintained contact), activated by the current limit.
- In case of **Building Management System (BMS)** avoid repetitive commands in the same direction. For further information contact our BSR Technical Department.
- In case of vents with four-bar hinges, please contact our BSR Technical Department.
- If installed on PVC windows, the profile has to be reinforced.
- For a higher resistance against atmospheric agents, it is available on request the **UCS Twin Quasar DC** version with protection class **IP42**.
- Available the version Twin Quasar BMSline with programmable features (stroke, speed, force, etc.) and different scenarios selectable with a connection to a computer and dedicated software. See BMSline section (upon request).
- 24 V DC version is suitable for installation on **Smoke Window Ventilators** in conformity to **European Standard EN12101-2**.

Technical Data	TWIN QUASAR AC	TWIN QUASAR DC	TWIN QUASAR DC F-Signal
VOLTAGE SUPPLY	100 V AC - 240 V AC	24 V DC $\pm$ 10%	24 V DC $\pm$ 10%
ELECTRIC CONNECTION	3 wires + earth	2 wires	2+3 wires
OPERATION		by polarity inversion	by polarity inversion
STROKE	500 mm	500 mm	500 mm
FORCE (push and pull action)	600 N	600 N	600 N
SPEED	~ 15 mm/s	~ 15 mm/s	~ 15 mm/s
CURRENT ABSORPTION (with max load)	0.9 A – 0.4 A	1.8 A	1.8 A
PARALLEL CONNECTION	YES	YES	YES
LIMIT STOP	Electronic	Electronic	Electronic
SAFETY STOP	Electronic	Electronic	Electronic
FEEDBACK SIGNAL			Open/close
PROTECTION CLASS	IP 40	IP 40	IP 40

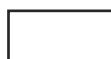
## Colour Type:



SILVER ANODIZED



BLACK RAL 9005



WHITE RAL 9010

## SPECIFICATION PROSPECT

Electric chain actuator brand named **UCS TWIN QUASAR** with two chains in double stainless steel links and electronic circuit for the two internal motors control. Force 600 N. Stroke 500 mm. Voltage supply 100-240 V AC or 24 V DC. Electronic limit stop and electronic stop in the intermediate positions in case of overload. Pivoting brackets included. Parallel connection. Aluminium casing anodized or painted. Conform to 2006/95/CE and 2004/108/CE directives (the 24 V DC version is conform to 2004/108/CE directive).

Electric chain actuator brand named **UCS Twin Vega** with two chains in double stainless steel links and electronic circuit for the two internal motors control. Force 600 N. Stroke 300 mm. Voltage supply 24 V DC. Electronic limit stop and electronic stop in the intermediate positions in case of overload. Pivoting brackets included. Parallel connection. Aluminium casing anodized or painted. Conform to 2004/108/CE directive.



# Project Reference: UCS TWIN QUASAR



# UCS VEGA - SYNCHRO VEGA

Chain actuator - Force in push action 300 N - Maximum stroke 300 mm.



Natural Air Window Ventilation System.



Natural Smoke Window Ventilation System.

- Highest performance in minimum size: the die-cast aluminium casing has a very small section (45 x 32 mm) and can be easily built-in into the frame of curtain walls.
- Chain in double stainless steel links.
- Chain exit in central position.
- Quick and easy installation: the manual closing position regulation is not required, avoiding possible mistake. The stop in closing position is regulated by an electronic limit switch.
- If installed on PVC windows, the profile has to be reinforced.
- Electronic stop in the intermediate positions in case of overload.
- Supplied with 1.5 m cable (**UCS VEGA**) or 3 m (**UCS SYNCHRO VEGA**) and pivoting brackets.
- The installation without brackets is possible for windows with pivoting hinges only if the vent height is at least 900 mm.
- In case of vents with four-bar hinges, please contact our BSR Technical Department.
- The **UCS VEGA RF** version has an integrated radio receiver and it is supplied with radio remote control; the transmitter controls simultaneously more actuators within its field of action; available on request actuators and remote controls with different radio codes.
- **UCS SYNCHRO VEGA** version is equipped with an integrated speed synchronization control board that allows the mounting of more than one actuator (max 4) open or close on the same vent, avoiding the installation of an external control panel.
- In case of Building Management Systems avoid repetitive command in the same direction. For Further information contact our BSR Technical Department.
- **UCS VEGA DC F-SIGNAL** and **UCS SYNCHRO VEGA DC F-SIGNAL** are a special version with opening and closing feedback signal (free potential, maintained contact), activated by the current limit. **UCS SYNCHRO VEGA DC F SIGNAL** is provided with additional cable.
- For a higher resistance against atmospheric agents, it is available on request the **UCS VEGA DC** version with protection class **IP32**.
- Available the version Vega BMSline with programmable features (stroke, speed, force, etc.) and different scenarios selectable with a connection to a computer and dedicated software. See BMSline section (upon request).
- 24 V DC version is suitable for installation on **Smoke Window Ventilators** in conformity to **European Standard EN12101-2** tested by **Giordano Institute (Italy)**.

Technical Data	VEGA RF-RAIN
VOLTAGE SUPPLY	100 V AC - 240 V AC
ELECTRIC CONNECTION	4 wires + earth + 3 wires
OPERATION	
STROKE	300 mm
FORCE (push and pull action)	300 N
SPEED	~ 9 mm/s
CURRENT ABSORPTION (with max load)	0.3 A – 0.15 A
PARALLEL CONNECTION*	YES
LIMIT STOP	Electronic
SAFETY STOP	Electronic
FEEDBACK SIGNAL	
PROTECTION CLASS	IP 30
	Integrated radio receiver Radio control included Cable connection for rain sensor

\* Only VEGA RF can be connected in parallel with VEGA RF-RAIN.

## Colour Type:



GREY RAL 9006



BLACK RAL 9005



WHITE RAL 9010

### UCS VEGA RF / RF-RAIN

The **UCS VEGA RF** and **UCS RF-RAIN** models are controlled by a radio transmitter (frequency 433,92 MHz) and is possible to connect them to a thermostat without any control panel. **UCS VEGA RF** and **UCS VEGA RF-RAIN** can be connected in parallel.

**UCS VEGA RF-RAIN** version is supplied with cable for direct connection to a rain sensor (rain sensor not included).

It is possible to order **UCS VEGA RF** actuator without radio control and the radio control separately (it is possible to control more actuators with the same radio transmitter). Available on request actuators + remote control with different radio codes.

### SPECIFICATION PROSPECTS

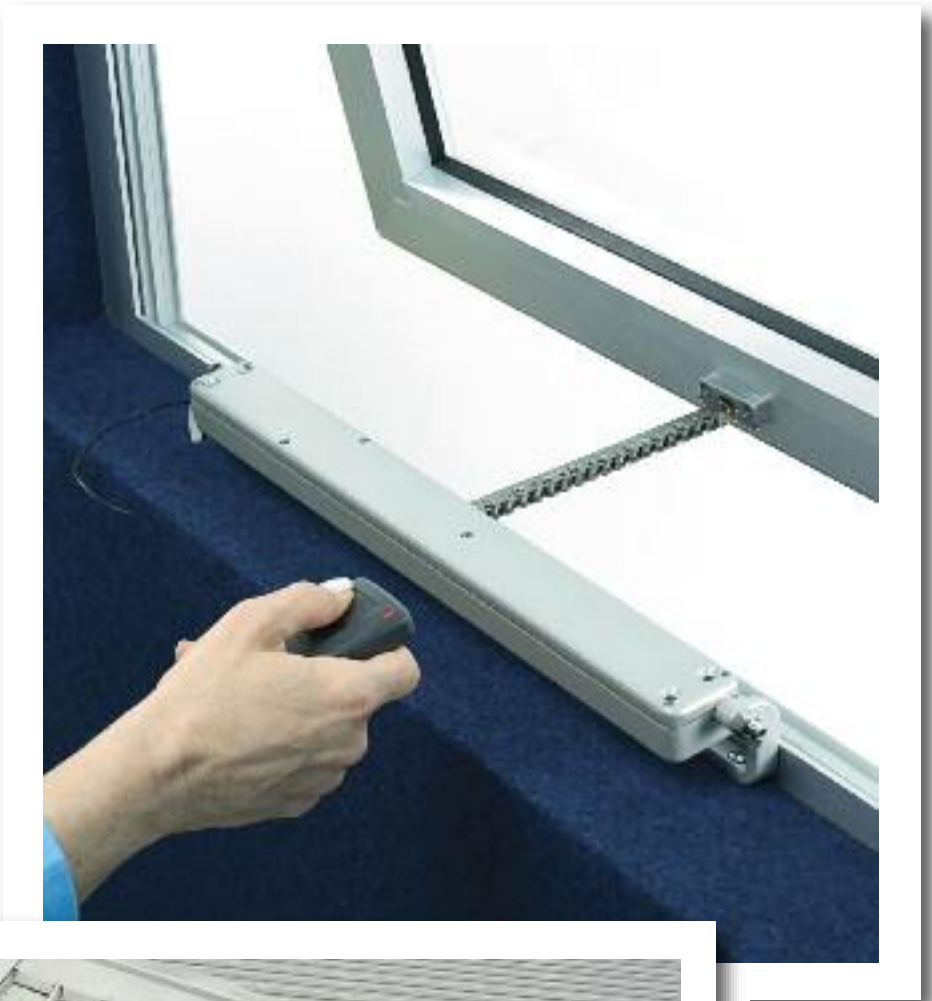
Electric chain actuator brand named **UCS VEGA** with chain in double stainless steel links.

Voltage supply: from 100 to 240 V AC or 24 V DC – Electronic limit stop; electronic stop in the intermediate positions in case of overload. Casing in painted die-cast aluminium with very small section (45x32 mm). Pivoting brackets included. The 100-240 V AC version and the 24 V DC version are conform to 2004/108/CE directives, the 100-240 V AC version is conform also to 2006/95/CE directive.

Electric chain actuator brand named **UCS SYNCHRO-VEGA** with chain in double stainless steel links. Suitable for mounting more than one actuators (max 4 actuators) on the same vent. Voltage supply: 24 V DC – Electronic limit stop; speed control; electronic stop in the intermediate positions in case of overload. Casing in painted die-cast aluminium with very small section (45x32 mm). Pivoting brackets included. It is conform to 2004/108/CE directive.



## Project Reference: VEGA RF RAIN



# UCS SUPERMASTER

Chain actuator - Force in push action 400 N - Stroke 450-600-800 mm.



Natural Air Window Ventilation System.



Natural Smoke Window Ventilation System.

- The longest stroke (800 mm) and the highest force (400 N) for a chain actuator: it solves the problems to operate very heavy vents and the necessity of wide opening without taking up space inside the room (800 mm only for bottom hinged windows).
- Double link chains.
- Red lamp placed on the actuator to signal the close position.
- Supplied with 2 m cable (450-600 mm), 3 m cable (800 mm).
- For windows without windowsill a fixing bracket (sliding within the dovetail slide) is available for an easy installation.
- Minimum window height: 900 mm for 450 mm stroke, 1200 mm for 600 mm stroke, 1600 mm for 800 mm stroke.
- In case of lower windows install the "pivoting brackets" (see installation examples upon request).
- In case of vents with four-bar hinges, please contact our BSR Technical Department.
- Available on request a coupling control box for two actuators on the same window.
- 24 V DC version is suitable for installation on **smoke and heat window ventilation systems** in conformity to **UNI EN 12101-2**.
- 24 V DC version is suitable for installation on **Smoke Window Ventilators** in conformity to **European Standard EN 12101-2**, tested by **Giordano Institute (Italy)**.

Technical Data	SUPERMASTER 230 V AC	SUPERMASTER 24 V DC *
STROKE	450 - 600 - 800 mm	450 - 600 - 800 mm
VOLTAGE SUPPLY	230 Vac $\pm$ 10%	24 Vdc $\pm$ 10%
ELECTRIC CONNECTION	3 wires + earth	(3 wires) + 2 wires + signalling
OPERATION		by polarity inversion
FORCE (push action)	400 N (300 N for 800 mm stroke)	400 N (300 N for 800 mm stroke)
FORCE (pull action)	400 N	400 N
SPEED	$\sim$ 23 mm/s	$\sim$ 20 mm/s
CURRENT ABSORPTION (with max load)	0,8 A	2 A
PARALLEL CONNECTION	YES	YES
LIMIT STOP	Micro switches	Micro switches
SAFETY STOP	Thermic	Electronic
FEEDBACK SIGNAL		Open/close
PROTECTION CLASS	IP 20	IP 20

## Colour Type:



SILVER ALUMINIUM



DARK BROWN ANODIZED

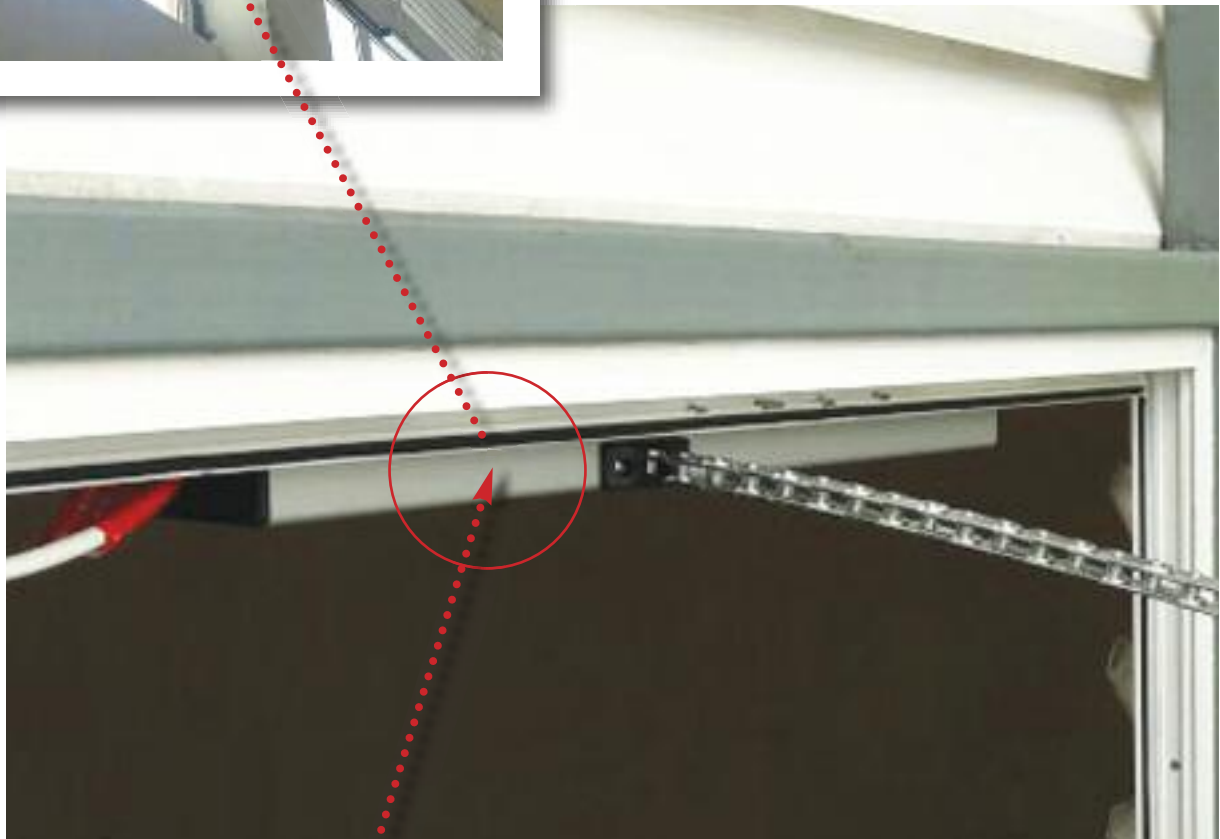
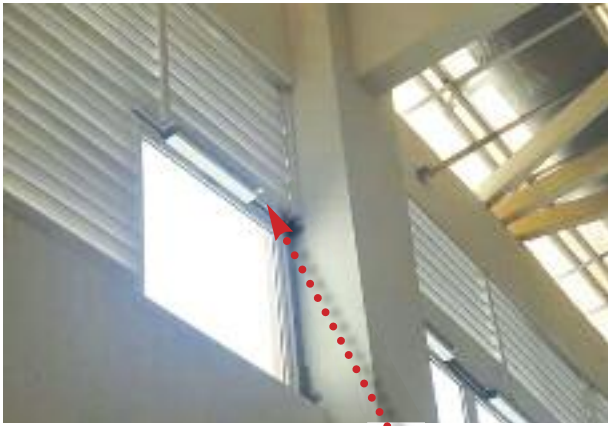


WHITE PAINTED RAL 9010

## SPECIFICATION PROSPECTS

Electric chain actuator brand named **UCS SUPERMASTER** with double link chain. Force 400 N. Strokes: 450-600-800 mm. Voltage supply 230 V AC or 24 V DC. Limit stop by micro switches and thermal protection (230 V AC version) or electronic safety stop (24 V DC version). Parallel connection. Casing in silver anodized or painted aluminium. The 230 V AC version and the 24 V DC version are conform to 2004/108/CE directive, the 230 VAC version is also conform to 2006/95/CE directive.

# Project Reference: UCS SUPERMASTER



MARA University of Technology (UiTM), Sungai Buloh,  
Shah Alam, Selangor, Malaysia.

# UCS MAX

Linear spindle actuator - Force in push action 450 N with stroke 180 mm and 300 mm and 350 N with stroke 500 mm.



Natural Air Window Ventilation System.

- Load transmission by rigid spindle.
- Equipped with an adjustable eyelet for an easier installation. A version with fixed eyelet is available.
- Supplied with end bracket.
- Supplied with 1m cable.
- To make the installation easy also on window with windowsills or other internal obstacles, the external side of the actuator is supplied with two dovetail guides in which a sliding bracket, to be ordered separately, can slide for the whole length of the profile.
- Not suitable for external application. In this case a special version on request (MAX WP).
- Two holes for more versatile installation of the fixing brackets.
- A kit to reduce the stroke is available.

Technical Data	MAX 230 V AC
VOLTAGE SUPPLY	230 Vac $\pm$ 10%
ELECTRIC CONNECTION	3 wires + earth
STROKE	180/300/500 mm
FORCE (push and pull action)	450 N (180 - 300 mm) / 350 N (500 mm)*
SPEED	~ 20 mm/s
CURRENT ABSORPTION (with max load)	0,7 A
PARALLEL CONNECTION	YES
LIMIT STOP	microswitches
SAFETY STOP	Thermic
IP PROTECTION	IP 65

## Colour Type:



**SILVER ANODIZED WITH END BRACKETS**



**DARK BROWN ANODIZED WITH END BRACKETS (with adjustable terminal)**



**SILVER ANODIZED WITH SLIDING BRACKETS (with fixed terminal) – 300/500mm stroke only**

## SPECIFICATION PROSPECTS

Electric Linear actuator brand named **UCS MAX** with load transmission by rigid spindle, stroke 180, 300 or 500 mm fixing end bracket included. Force 450 N (350 N for stroke 500). Protection class IP65, Voltage supply 230 V AC. Limit stop by micro switches and thermal protection. Parallel connection. Casing in silver anodized, dark brown anodized. Conform to 2006/95/CE and 2004/108/CE directives.

\* if installed on top hinged window the maximum force on push action is reduced to 300 N (for 180 and 300 mm stroke) and 230 N (for 500 mm). In case of installation on heavy top hinged windows, contact our BSR Technical Department.

## Project Reference: UCS MAX



Sierramas Bungalow Residence, Federal Territory of Kuala Lumpur, Malaysia.

# UCS ULYSSES - ULYSSES RWA

Linear spindle actuator - Force in push action 650 N - Stroke 180 and 300 mm.



Natural Air Window Ventilation System.



Natural Smoke Window Ventilation System.

- Minimum size: external diameter 34 mm. Suitable to be put in the profile of the window.
- Load transmission by rigid spindle.
- Particularly suitable to operate sun blades.
- High protection from atmospheric agents (IP 65).
- Warning: the actuator is provided with electronic limit stop. When the actuator is in stroke end positions, if in closing, do not repeat the closing operation, and vice versa in opening.
- Supplied with steel end bracket and connector. Front or back fixing possibility.
- Aluminium back bracket to be ordered separately.
- A kit to reduce the stroke is available.
- Special version **UCS Ulysses RWA** with all external parts in aluminium suitable for installation on **Smoke Window Ventilators** in conformity to **European Standard EN 12101-2** and tested by **Giordano Institute (Italy)**.

Technical Data	ULYSSES 24 V DC
VOLTAGE SUPPLY	24V DC $\pm$ 10%
ELECTRIC CONNECTION	2 wires
OPERATION	by polarity inversion
STROKE	180/300 mm
FORCE (in push and pull action)	650 N
SPEED	6 mm/s
CURRENT ABSORPTION (with max load)	~ 1 A
PARALLEL CONNECTION	YES
LIMIT STOP	Electronic
PROTECTION CLASS	IP 65

## Colour Type:



SILVER ANODIZED

## SPECIFICATION PROSPECTS

Electric linear actuator brand named **UCS ULYSSES** - Load transmission by rigid spindle, stroke 180 mm or 300 mm, external diameter 34 mm, fixing bracket included. Force 650 N. Protection class IP 65. Voltage supply 24V DC. Parallel connection. Electronic safety limit stop. Casing in silver anodized. Conform to 2004/108//CE directive.





# UCS FORCE

Linear spindle actuator - Force in push action 1000 N - Stroke 500, 750 and 1000 mm.



Natural Air Window Ventilation System.

- Load transmission by stainless steel spindle diameter 22 mm.
- High protection from atmospheric agent (IP 65).
- Supplied with fixing bracket and connector. Front or back fixing.
- For a smaller dimension is available a back bracket to be ordered separately.
- Warning: the actuator is provided with electronic limit stop. When the actuator is in stroke end positions, if in closing, do not repeat the closing operation, and vice versa in opening.

Technical Data	FORCE 24 V DC
VOLTAGE SUPPLY	24 V DC $\pm$ 10%
ELECTRIC CONNECTION	2 wires
OPERATION	by polarity inversion
STROKE	500/750/1000 mm
FORCE (in push and pull action)	1000 N
SPEED	~ 6 mm/s
CURRENT ABSORPTION (with max load)	~ 1,4 A
PARALLEL CONNECTION	YES
LIMIT STOP	Electronic
SAFETY STOP	Electronic
PROTECTION CLASS	IP 65

## Colour Type:



**SILVER ANODIZED**

## SPECIFICATION PROSPECTS

Electric linear actuator brand named **UCS FORCE** with load transmission by rigid stainless spindle  $\varnothing$  22 mm. Stroke 500, 750 - 1000 mm. Voltage supply: 24 V DC. Force 1000 N. Class protection IP 65. Parallel connection. Electronic safety limit stop. Casing in silver anodized. Conform to 2004/108/CE directive.



## Project Reference: UCS FORCE



Singapore Chinese Orchestra (Singapore Conference Hall), Singapore.

# UCS RACK, DUAL RACK and DOUBLE RACK

Linear rack actuators - Force in push action 650/1500 N - Stroke 180, 350, 550, 750 and 1000 mm.



Natural Air Window Ventilation System.



Natural Smoke Window Ventilation System.

- 10 mm square rack transmission for stroke 180 mm, 350 mm, 550 mm and 12 mm square rack transmission for stroke 750 mm to 1000 mm.
- Supplied with 1.5 m cable.
- Available end brackets or sliding brackets (to be ordered separately); the dovetail slide allows the fixing on the whole length of the rack actuator.
- 24 V DC version is suitable for installation on **smoke and heat window ventilation systems** in conformity to **European Standards UNI EN 12101-2**.
- (\*) RACK 24 V DC approved by **Giordano Institute (Italy) (test report 243341)** and **TÜV NUM (Germany): KH 00.1.2**.
- 24 V DC version is suitable for installation on **Smoke Window Ventilators** in conformity to **European Standard EN 12101-2**, tested by **Giordano Institute (Italy)**.

## MULTIPLE SYSTEMS

- For large domes or top hinged windows or to provide more stability, the **UCS RACK** actuator can be used either in the **UCS DUAL RACK** or in the **UCS DOUBLE RACK** version, providing two or more push points on the same vent. **UCS DOUBLE RACK** provides the double of the force.
- **UCS DUAL RACK**: push force 650 N (230 V AC) - 750 N (24 V DC). For each system assembly are necessary 1 RACK actuator, 1 RACK group, 1 connecting rod and 2 end brackets.
- **UCS DOUBLE RACK**: push force 1300 N (230 V AC) - 1500 N (24 V DC) For each system assembly are necessary 1 RACK actuator, 1 Auxiliary RACK actuator in parallel connection, 1 connecting rod and 2 end brackets.
- Other multiple systems: It is also available a RACK Group Double Pivot for system assembly providing 3 or more push Points.

Technical Data	RACK 24 V AC	RACK 24 V DC
VOLTAGE SUPPLY	230 V AC $\pm$ 10%	24 V DC $\pm$ 10%
ELECTRIC CONNECTION	3 wires + earth	2 wires + signalling
OPERATION by		polarity inversion
FORCE IN PUSH ACTION	650 N	750 N
FORCE IN PULL ACTION	350 N	650 N
SPEED	~ 8 mm/s	~ 8 mm/s
CURRENT ABSORPTION (with max load)	0,1 A	1 A
PARALLEL CONNECTION	YES	YES
LIMIT STOP	Electronic	Electronic
SAFETY STOP	Electronic	Electronic
FEEDBACK SIGNAL		open/close
PROTECTION CLASS	IP 55	IP 55

## Colour Type:



SILVER ANODIZED

## SPECIFICATION PROSPECTS

### UCS RACK

Electric linear actuator brand named **UCS RACK**. Available strokes 180, 350, 550, 750 or 1000 mm. Voltage supply: 230 V AC or 24 V DC. Electronic safety limit stop and electronic stop in the intermediate positions. Parallel connection. Color: silver anodized. Force 650 N/750 N. Rack 230 Vac and Rack 24 V DC are conform to 2004/108/CE directive, the 230 V AC version is also conform to 2006/95/CE directive.

### UCS DUAL RACK:-

System assembly with two push points composed by one RACK Actuator, one RACK Group and a connecting rod. Force 650 N/750 N.

### UCS DOUBLE RACK:-

System assembly with two push points composed by one RACK Actuator, one auxiliary RACK and a connecting rod. Force 1300 N/1500 N. Systems with more than two push points can be obtained with a Rack Group double pivot.

## Project Reference: UCS DOUBLE RACK



# Project Reference: UCS DOUBLE RACK



# UCS CONTROL PANEL CRM & ACCESSORIES

## Control unit and meteorological detection system.

### UCS CRM CONTROL PANEL

The meteorological CRM control panel, controls up to four actuators or group of actuators independently and, allows the automatic closing of the windows in case of rain or wind alarm conditions detected by the sensors or by the intervention of the thermostat.

Technical Data	CRM 1	CRM 2
INPUT VOLTAGE SUPPLY	230 Vac	230 Vac
OUTPUT VOLTAGE SUPPLY	24 Vdc	230 Vac
OUTPUT (max load each output)	4 for 1 A	4 for 1,5 A
Technical features of the connected actuators:		
ELECTRIC CONNECTION	2 wires	3 wires + earth
OPERATION	by polarity inversion	
ABSORPTION (with max load)	4 A	6 A

**KP PUSH BUTTON:** Using this push button it is possible to select and drive separately the four actuators or groups of actuators, or operate the four lines contemporary.

**RC REMOTE CONTROL:** On the KP push button there is an infra-red receiver that allows the use of the RC remote control having the same functions of the push button. The remote control is supplied with a proper wall support.

**PUSH BUTTON:** It is possible to operate manually all the actuators contemporary, connecting to the CRM a standard double push button with return spring. The closing and opening inputs are memorized for three minutes in order to allow also at the actuators with very long stroke to complete their movement. The control panel is arranged for the connection of three sensors that control the weather events:

**TH THERMOSTAT:** The thermostat, if present, has the priority on the manual control: if the temperature is superior to the set one, the windows open, if inferior the windows close; to disable the thermostat act on its selector. Particularly suitable for conservatories and mansards. Built in on/off switch.

**RS RAIN SENSOR:** In case of rain, the rain sensor sends the signal for window automatic closing that is indicated by a red LED in front of the control panel; it is possible to disconnect this sensor acting on the on/off switch on the front of the control panel. Further to the sensor intervention it is not possible, without disabling this sensor, to control the actuators until 8 min. after the end of the event. A heating element prevents dew formation on the surface. Particularly suitable for roof windows and sloping top hinged windows.

**WS WIND DETECTOR:** It emits a variable signal according to the wind intensity and acts on the control panel as the rain sensors do. With reference to the anemometer, it is possible to choose, using a rotating selector with 10 positions, at which wind speed the control panel operates the closing. Selecting 0 the anemometer is disabled while positions from 1 to 9 correspond to Beaufort wind force scale.

**FLUSH MOUNT DOUBLE PUSH BUTTON:** Once connected to control panel allows to operate all window for natural ventilation.

**FLUSH MOUNT BIPOLAR PUSH BUTTON:** For the actuators with polarity inversion operation.

**WALL PUSH BUTTON WITH TWO BUTTONS:** For all the actuators with 3 wires operation.

**COUPLING CONTROL UNIT CP230:** It permits to control a couple of 230 V AC actuators (STILE, SINTESI 2000, SUPERMASTER 230 V AC, MAX). In case of sudden failure, or blockage of any of the two actuators the other will also be stopped. In case of automatic control (BMS-Building Management System) avoid repetitive commands. Ask even for actuators having similar speeds for coupling installation.

**RELAIS BOX (RB24-E):** It allows to control 24 V DC actuators (at polarity inversion) through a standard 3 wires operation (open-close-common) and a voltage supply up to 20 A in two outputs current absorption. It can also be connected to control units UCS-CRM1 to expand the output load. Dimensions: mm 154x113x75



**Coupling Control Unit CP230**



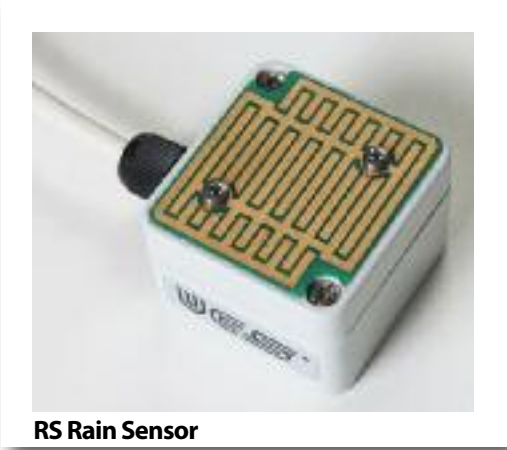
**CRM Control Panel**



**KP Push Button**



**Flush Mount Push Button**



**RS Rain Sensor**



**RC Remote Control**



**Bipolar Push Button**



**Thermostat**



**WS Wind Detector**

# ADDITIONAL LOCKING DEVICES

## for automated windows with multiple locking points

In accordance with the standards related to energy saving, water- and airtightness of the windows has become even more important, requiring hardware systems with multiple locking points.

In case of window automation it is necessary to complement the chain actuator with a further actuator, able to operate in a transversal way the window hardware, in order to engage multiple locking points on the frame.

UCS provides two solutions for this purpose: **UCS E-LOCK** and **UCS PLUSULTRA**

## UCS E-LOCK

### electric additional locking device to be installed inside the frame of the window

UCS E-LOCK is a linear drive designed to lock the window hardware and ensure, in combination with a chain actuator, the best window closing tightness. E-LOCK has to be integrated into or installed in the window profile.

It has been designed to be used in combination with electric chain actuators series UCS QUASAR and UCS VEGA 24 V DC (UCS TWIN QUASAR and UCS TWIN VEGA included).

- Stainless steel case.
- The locking plate can be mounted on both side of the drive.
- Provided with an emergency unlocking mechanism.
- Different strokes can be selected by internal switches.
- Available a version to be used with UCS QUASAR BMS and UCS VEGA BMS actuators for the connection to a network of Building Management System.
- UCS E-LOCK is suitable for installation on **Smoke Window Ventilators** in conformity to **European Standard EN 12101-2**, tested by **Giordano Institute (Italy)**.

Technical Data	E-LOCK	E-LOCK BMS
POWER SUPPLY	24 Vdc $\pm$ 10%	24 Vdc $\pm$ 10%
OPERATION	polarity inversion	via BUS line
STROKE selectable by switches	19 mm - 38 mm	19 mm - 38 mm
FORCE (push and pull)	600 N	600 N
SPEED (full load)	~ 1,6 mm/s	~ 1,6 mm/s
CURRENT ABSORPTION (max load)	0,2 A	0,2 A
PARALLEL CONNECTION	YES	YES
LIMIT STOP	Hall sensor	Hall sensor
SAFETY STOP	Electronic	Electronic
PROTECTION CLASS	IP 32	IP 32
BMS Compatible	NO	YES



## Operating logic

### UCS E-LOCK

Opening: the actuator unlocks the hardware and, three seconds after the complete release, power is supplied to the chain actuator.  
Closing: the actuator operates the locking hardware three seconds after a free potential signal from end-stroke switches (for example magnetic contact placed between the frame and the sash to ensure the effective close position of the window, or signal coming from UCS actuators in "F-Signal" versions). When the free potential signal is not available, UCS E-Lock operates the hardware after a certain time from the closing command, selectable by dip switches.

### UCS E-LOCK BMS

UCS E-LOCK BMS communicates via BUS line with chain actuators BMSline, whose electronic board manages the feedback information and checks the locking or unlocking status of the hardware.

# UCS PLUSULTRA

## Additional locking device - NOT MOTORIZED

### PATENTED

UCS PLUSULTRA is an easy inexpensive solution for the automation of windows with multiple locking points, avoiding the installation of additional electric actuators (or electronic locks).

- It is suitable for outward opening windows.
- UCS PLUSULTRA has to be installed together with chain actuators series UCS QUASAR and UCS VEGA. A version for manual opening mechanism is also available.
- The force to release the locking points (before opening) and engage them again (after complete closing) is supplied by the chain of the electric actuator during the first part of its travel.
- The transmission of the movement is provided by 90° rotation of the standard pin for internal gear (7x7 mm) included in UCS PLUSULTRA. The gearbox integrated in the profile operates the bars of the multiple docking hardware.
- UCS PLUSULTRA provides max torque of 0.34 Nm, usually suitable for operation of max 4 locking points
- According to the actuator to which it is connected, different fixing systems are necessary.

### POSSIBLE CONFIGURATIONS

PLUSULTRA RIGHT/LEFT + QUASAR (electric actuator) + specific brackets

PLUSULTRA RIGHT/LEFT + VEGA (electric actuator) + specific brackets

PART No.

-  PLUSULTRA RIGHT GREY RAL9006
-  PLUSULTRA RIGHT BLACK RAL9005
-  PLUSULTRA RIGHT WHITE RAL9010

-  PLUSULTRA LEFT GREY RAL9006
-  PLUSULTRA LEFT BLACK RAL9005
-  PLUSULTRA LEFT WHITE RAL9010



# ELECTRA<sup>®</sup> VENTILATING ROOF WINDOW

is a newly design ventilating roof window that allows you to bring in the majestic view of the blue sky into the interiors of your home or building. The roof window is fitted with high quality laminated glass to avoid discoloration. The laminated glass gives maximum impact resistance and is covered with a low-emissivity film that helps block solar heat into the rooms.

Designed to serve as a dual purpose roof window that is either for natural air ventilation and natural smoke ventilation out of the building. The roof window is also equipped with highly innovative and technologically advance window automation system actuators that electrically opens and closes the window.

## The Advantages:-

1. Reduces the need for artificial lighting during the day.
2. Naturally lightens up dark corners of the building.
3. Provide fresh air ventilation into the interior environment of the building.
4. Natural ventilation for healthy indoor environment and energy saving.
5. Reduces air conditioning and increases night cooling.
6. Provide natural smoke ventilation for the protection of the building in case of fire.
7. Can be integrated into the building management system.

## Improved Design:-

1. Standard size is 820mm (w) x 1070mm (l).
2. Rectangular in shape equipped with better sealant to avoid leakage in rainy weather.
3. Fitted with high quality laminated glass to avoid discoloration. (Option: Polycarbonate Clear Glass is also available upon demand!).
4. The laminated glass gives maximum impact resistance. (Option: Polycarbonate Clear Glass is also available upon demand!).
5. The glazed glass is covered with a low-emissivity film that helps block solar heat into the rooms.
6. Frames are manufactured to be long lasting and durable.
7. Serve dual purpose either for natural air ventilation and natural smoke ventilation out of the building.
8. Equipped with Ultraflex Control System (UCS) brand actuators that electrically opens and closes the window. Can also be optionally equipped with thermal sensors, and remote control devices (upon demand!).

## Specification Table:-

Technical Details Skylight Details	Specification
Frame Thickness	3 mm
Material Used	Aluminium
Colour	Standard Grey (Polyester Powder Coated)
Cover Width	820 mm
Cover Length	1,070 mm
Base Width	1000 mm
Base Length	1163 mm
Height	240 mm
Glass Thickness	8.4 mm
Glass Type	Laminated Low E
Weight	35 kg
Actuators Details	
Actuator	UCS VEGA RF RAIN
Actuator Colour	Standard Grey RAL 9006
Maximum Stroke	300 mm
Voltage Supply	100 V AC – 240 V AC
Electric Connection	4 wires + earth + 3 wires
Force (push and pull action)	250 N
Speed	~ 9 mm/s
Current Absorption (with max load)	0.3 A – 0.15 A
Parallel Connection	YES
Limit Stop	Electronic
Safety Stop	Electronic
Feedback Signal	-
Protection Class	IP 30 Integrated radio receiver Radio control included
UCS Accessories Included	Cable connection for rain sensor UCS RRC VEGA Remote Control UCS RS Rain Sensor

Project Reference: **ELECTRA** VENTILATING ROOF WINDOW



Masjid Darul Husni Warrahmah, Kuching, Sarawak, Malaysia.

Project Reference: **ELECTRA**™ VENTILATING ROOF WINDOW



Residential house in USJ, Subang Jaya, Selangor.

Project Reference: **ELECTRA<sup>®</sup>** DOUBLE VENT



Project Reference: **ELECTRA** VENTILATING ROOF WINDOW



Hospital Bintulu, Miri, Sarawak.

# Project References

## MALAYSIA

### AIRPORT

**Kuala Lumpur International Airport 2 (KLIA2)**, Sepang, State of Selangor, Malaysia.  
Product: UCS DOUBLE RACK 24 V DC - 1000mm stroke.  
System: Natural Smoke & Heat Window Ventilation System.

### UNIVERSITIES

**International Islamic University Malaysia**, Phase 2 Gambang, State of Pahang, Malaysia.  
Product: UCS SINTESI 2000 230 V AC - Selectable 250mm / 380mm stroke.  
System: Natural Smoke & Heat Window Ventilation System.

**International Islamic University Malaysia**, Phase 3, Gambang, State of Pahang, Malaysia.  
Product: UCS SINTESI 2000 230 V AC - Selectable 250mm / 380mm stroke.  
System: Natural Smoke & Heat Window Ventilation System.

**MARA University of Technology (UiTM)**, Sungai Buloh, Shah Alam, State of Selangor, Malaysia.  
Product: ELECTRA Ventilating Roof Window, UCS DUAL RACK and UCS SUPERMASTER.  
System: ELECTRA Double Vent System. (Natural Air Ventilation). – Current.

### COMMERCIAL / INDUSTRIAL BUILDINGS

**Nilai Factory**, Nilai, State of Negeri Sembilan, Malaysia.  
Product: UCS SUPERNOVA 230 V AC - Selectable 230 / 400 mm stroke.  
System: Automated Window Remote Control System (Natural Air Ventilation).

**TGV Office**, Kota Kinabalu, State of Sabah, Malaysia.  
Product: UCS VEGA RF RAIN 240 V AC - 300mm stroke.  
System: Automated Window Remote Control System (Natural Air Ventilation).

**Arkema Lychee**, Kertih Polymer Park Kemaman, State of Terengganu, Malaysia.  
Product: UCS SUPERNOVA 230 V AC - Selectable 230 / 400 mm stroke.  
System: Automated Window Remote Control System (Natural Air Ventilation).

**HP Global Centre**, Persiaran Rimba Permai, Cyberjaya, Malaysia.  
Product: UCS TWIN QUASAR 24 V DC 500mm stroke.  
System: Natural Smoke & Heat Window Ventilation System.

**Paramit at Penang Science Park**, State of Penang, Malaysia.  
Product: UCS SINTESI 2000 230 V AC & UCS SUPERMASTER 230 V AC.  
System: Natural Smoke & Heat Window Ventilation System.

**IKEA**, Cheras, Federal Territory of Kuala Lumpur, Malaysia.  
Product: UCS QUASAR L DC 600mm stroke & UCS TWIN QUASAR DC 500mm stroke.  
System: Natural smoke & Heat Window Ventilation System. – Current.

### HOSPITALS

**Hospital Bintulu**, Miri, State of Sarawak, Malaysia.  
Product: ELECTRA Ventilating Roof Window.  
System: Automated Window Remote Control System (Natural Air Ventilation). – Current.

### RELIGIOUS BUILDINGS

**Taiwan Buddhist Tzu Chi Foundation (Malaysia)**, Kepong, Federal Territory of Kuala Lumpur, Malaysia.  
Product: Control Panel for actuators.  
System: Automated Window Remote Control System (Natural Air Ventilation).

**Masjid Darul Husni Warrahmah**, Kuching, State of Sarawak, Malaysia.  
Product: ELECTRA Ventilating Roof Window.  
System: Automated Window Remote Control System (Natural Air Ventilation). – Current.

**Kompleks Islam Sarawak**, Miri, State of Sarawak, Malaysia.  
Product: Aluminium casting grills (Islamic design). – Current.

### RESIDENTIAL BUILDINGS

**Tropicana Bungalow Residences**, Damansara Utama, Federal Territory of Kuala Lumpur, Malaysia.  
Product: UCS SINTESI 2000 230 V AC - Selectable 250mm / 380mm stroke.  
System: Automated Window Remote Control System (Natural Air Ventilation).

**Private Bungalow Residence**, Macalester Road, State of Penang, Malaysia.  
Product: UCS SUPERNOVA 230 V AC - Selectable 230 / 400 mm stroke.  
System: Automated Window Remote Control System (Natural Air Ventilation).

**Private Terrace House Residence**, Bangsar, Federal Territory of Kuala Lumpur, Malaysia.  
Product: UCS SINTESI 2000 230 V AC - Selectable 250mm / 380mm stroke.  
System: Automated Window Remote Control System (Natural Air Ventilation).

**Tropicana Bungalow Residences**, Damansara Utama, Federal Territory of Kuala Lumpur, Malaysia.  
Product: UCS SUPERNOVA 230 V AC - Selectable 230 / 400 mm stroke.  
System: Automated Window Remote Control System (Natural Air Ventilation).

**Damansara Heights Bungalow Residences**, Damansara Heights, Federal Territory of Kuala Lumpur, Malaysia.  
Product: UCS ULYSSES 24 V DC - 180 / 300mm stroke.  
System: Automated Window Remote Control System (Natural Air Ventilation).

**The Mines Bungalow Residence**, Mines Resort City, State of Selangor, Malaysia.  
Product: UCS ULYSSES 24 V DC - 180 / 300mm stroke.  
System: Automated Window Remote Control System (Natural Air Ventilation).

**Desa Park City Residence**, Desa Park City, Federal Territory of Kuala Lumpur, Malaysia.  
Product: UCS ULYSSES 24 V DC - 180 / 300mm stroke.  
System: Automated Window Remote Control System (Natural Air Ventilation).

**Glenmarie Bungalow Residence**, Shah Alam, State of Selangor, Malaysia.  
Product: UCS VEGA RF-RAIN 240 V AC - 300mm stroke.  
System: Automated Window Remote Control System (Natural Air Ventilation).

**Bukit Gasing Residence**, Petaling Jaya, State of Selangor, Malaysia.  
Product: UCS ULYSSES 24 V AC -3000mm stroke, UCS SUPERNOVA 230V.  
AC - Selectable 230 / 400 mm stroke.  
System: Automated Window Remote Control System (Natural Air Ventilation).

**Kemenseh Bungalow Residence**, Ampang, Federal Territory of Kuala Lumpur, Malaysia.  
Product: UCS SUPERNOVA 230 V AC - Selectable 230mm / 400mm stroke.  
System: Automated Window Remote Control System (Natural Air Ventilation).

**Taman Golf View Residence**, Kota Kinabalu, State of Sabah, Malaysia.  
Product: UCS VEGA RF-RAIN 240 V AC - 300mm stroke.  
System: Automated Window Remote Control System (Natural Air Ventilation).

**Sungai Long Residence**, Kajang, State of Selangor, Malaysia.  
Product: Adjustable Window Louvers.  
System: Adjustable Window Louvre System.

**Indah Subang Condominium - Penthouse**, Subang Jaya, State of Selangor, Malaysia.  
Product: Adjustable Window Louvers.  
System: Adjustable Window Louvre System.

**Kelab Golf Sultan Abdul Aziz Shah Bungalow Residence**, State of Selangor, Malaysia.  
Product: Top hung window with powder coated maroon finish & 6 mm dark tinted glass (Supply & Install).

**Sierramas Bungalow Residence**, Federal Territory of Kuala Lumpur, Malaysia.  
Product: Sunshade & Canopy Motorised Louvers.  
System: Automated Window Remote Control System (Natural Air Ventilation).

**Terrace House Residence**, Ipoh Timur Garden, Ipoh, State of Perak, Malaysia.  
Product: UCS SINTESI 2000 230 V AC - Selectable 250mm / 380mm stroke.  
System: Automated Window Remote Control System (Natural Air Ventilation).

**Residential House USJ 3A**, Subang Jaya, State of Selangor, Malaysia.  
Product: ELECTRA Ventilating Roof Window.  
System: Automated Window Remote Control System (Natural Air Ventilation).

**Ambang Botanic 2 Residence**, Klang, State of Selangor, Malaysia.  
Product: UCS VEGA RF RAIN 240 V AC - 300mm stroke.  
System: ELECTRA Ventilating Roof Window.

**Hartamas Height Residence**, Federal Territory of Kuala Lumpur, Malaysia.  
Product: UCS ULYSSES 24 V DC.  
System: Automated Window Remote Control System (Natural Air Ventilation).

**Kelana Jaya Bungalow**, Kelana Jaya, State of Selangor, Malaysia.  
Product: UCS ULYSSES 24 V DC.  
System: Automated Window Remote Control System (Natural Air Ventilation).

**Shaftbury Condominium**, Cyberjaya, State of Selangor, Malaysia.  
Product: UCS SUPERNOVA 230 V AC.  
System: Automated Window Remote Control System (Natural Air Ventilation).

**Eco Park Residence**, Shah Alam, State of Selangor, Malaysia.  
Product: UCS ULYSSES 24 V DC, UCS CRM 1 & ACCESSORIES.  
System: Automated Window Remote Control System (Natural Air Ventilation).

## SINGAPORE

### Commercial Buildings

**Singapore Chinese Orchestra (Singapore Conference Hall)**, Singapore.  
Product: UCS FORCE 24 V DC 500mm stroke & UCS Ulysses 24 V DC 300mm stroke.  
System: Automated Window Ventilation System (Natural Air Ventilation).

## INDONESIA

### Commercial Buildings

**Rasuna Tower**, Jakarta, Indonesia.  
Product: Breezeway 21 & 22 blades louvre LH Hdl., Grey & Natural Anodized Frame.

## Contact Us:

**For Peninsular Malaysia, contact:- Bronco Synergy Resources Sdn. Bhd. (1020341 - M)**

**Showroom Address :**

No. 5, Jalan Sungai Burung X32/X Bukit Rimau, Seksyen 32, 40460 Shah Alam,  
Selangor Darul Ehsan, Malaysia.

Tel : +603-51212831

Fax : +603-51210831

Email : [broncosynergy.net@gmail.com](mailto:broncosynergy.net@gmail.com)

Website : [www.bsr.com.my](http://www.bsr.com.my)

**For inquiries contact :**

Mr. Shaun A. Perera – Mobile: +6012-2231586.

Mr. Nigel A. Perera – Mobile: +6016-2323240.

**For East Malaysia & Brunei, contact:- Mont Building Resources (99255)**

**Showroom Address :**

Lot 459, 194-G, First Floor, Al-Idrus Commercial Centre, Jalan Satok, 93400 Kuching,  
Sarawak

Tel : +6 08 224 8871, +6 08 242 3819

Fax : +6 08 242 9651

Email : [montbrkch@gmail.com](mailto:montbrkch@gmail.com)

Website : [www.bsr.com.my](http://www.bsr.com.my)